










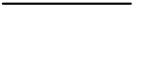
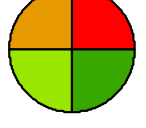




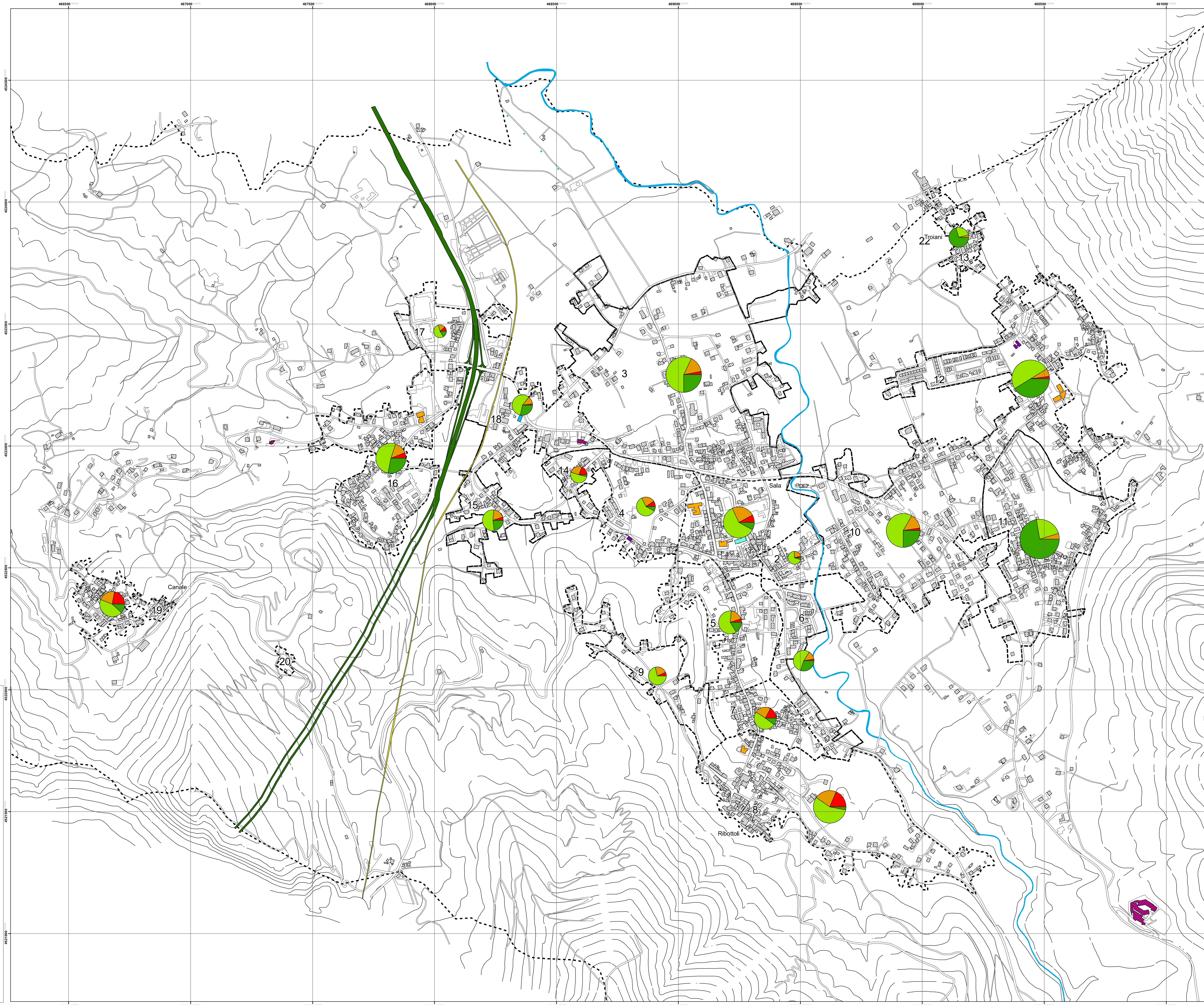
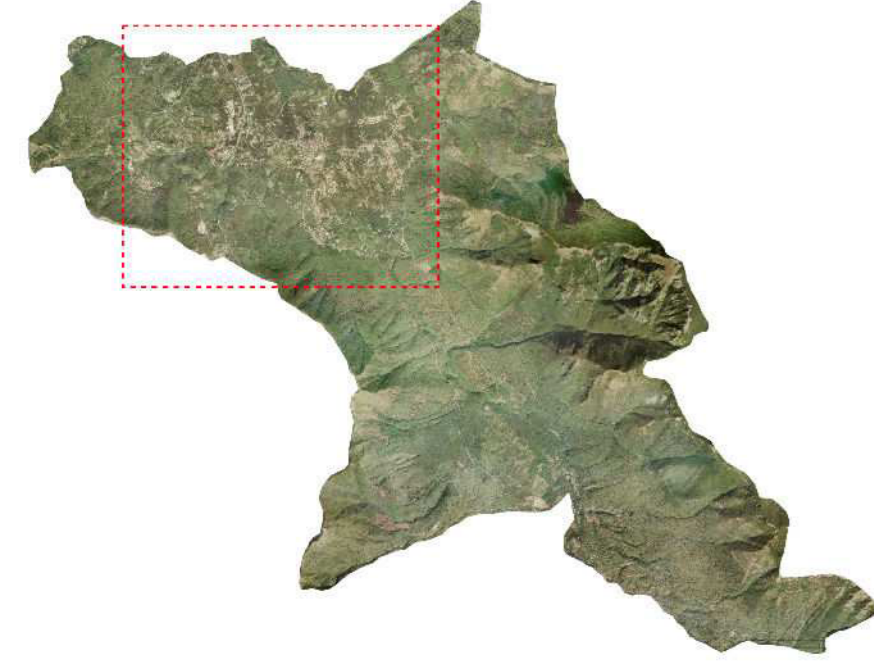



Legenda

-  Edifici Pubblici
 -  Ferrovia
 -  Autostrada
 -  Scuola
 -  Alberghi
 -  Municipio
 -  Stazione Carabinieri
 -  Sezioni Censuarie
 -  Edifici Residenziali
 -  Strade
 -  Fiume Sabato
 -  Curve Diretrici 5000
-
- Classe di vulnerabilità***
-  Unità di rappresentazione
50 Edifici
 -  A
 -  B
 -  C
 -  D



 COMUNE di SERINO	
Piano di Emergenza Comunale di Protezione Civile	
Rischio Sismico	
RS-03	Carta degli edifici nelle classi di vulnerabilità A, B, C e D (EMS 98)
Consulenti Tecnico - Scientifici Geol. Angelo Miranda Ing. Daniela De Marco Prof. Ing. Gerardo Mario Verderame Ing. Carlo Del Gaudio	Collaboratori: Ing. Paolo Ricci Protocollo generale Ufficio Tecnico Il R.U.P. Ing. Gaspare Grimaldi
scala 1: 5000 WGS84-UTM/33N	Giugno 2017